

Wireless Capabilities



Small Cell Jumpers

- 1-6 fibers
- Round armored & dielectric
- 4.8MM & 5.5MM cable OD
- LC-BIDI, LC-Pull Tab, LC/SX, LC/DX, LC Uniboot, SC, & Pushlok™



OptiTip® Harness

- Compatible with Corning & HFMOc assemblies & terminals
- 2-12 fibers
- Flat drop toneable & dielectric
- Round armored & dielectric
- Pinned & non-pinned
- LC-BIDI, LC-Pull Tab, LC/SX, LC/DX, LC Uniboot, SC, OptiTap®, & Pushlok™

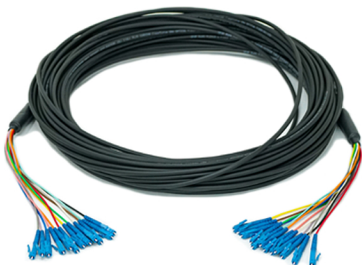


Ghost Terminals



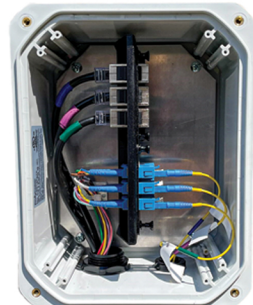
Macro Jumpers

- 2-12 fibers
- LC, ODC®, ODVA-LC, & MPO
- Weatherproof housings: Full AXS, Radial, & NSN Boots



Trunk Cables

- 6-144 fibers
- Flat drop toneable & dielectric
- Round armored & dielectric
- OptiTip®, SC, & LC
- APC & UPC Polish
- Indoor & Outdoor Breakouts: 900um, 2MM, 3MM, & 5MM
- Low loss



Pole Mount Enclosures

- 2-12 fibers
- IP68 rated
- OptiTip®, LC-BIDI, LC-Pull Tab, LC/SX, LC/DX, LC Uniboot, SC, OptiTap®, & Pushlok™
- APC & UPC Polish
- Pre-wired



Hybrid Jumpers

- 1-6 fibers
- 6-14 AWG
- Armored Indoor/Outdoor
- LC-BIDI, LC-Pull Tab, LC/SX, LC/DX, LC Uniboot, & SC
- Copper ends conduit



Coax Cables

- 4, 3, 10 Male-Female, N, & 7-16 DIN
- RET cables
- PIM tested

Custom & Quick Turn