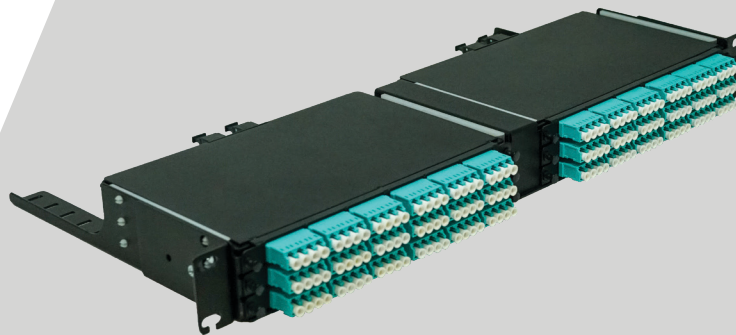


# NetSource Ultra High-Density 1RU LC-to-MTP® Cassette System



## Product Overview:

NetSource's Ultra High-Density (UHD) 1RU enclosure provides a compact, flexible, and performance-driven fiber management platform designed to optimize rack space and network scalability. Supporting up to 144 fibers in a single 1RU enclosure, this solution reduces rack space requirements while maintaining reliable optical performance and minimizing cable pathway congestion. Each UHD-1RU enclosure accommodates up to six 24F LC-to-MTP® cassettes, making it ideal for data centers, telecom networks, and enterprise environments demanding high-capacity fiber connectivity in a limited footprint.

## Technical Specifications:

- Enclosure Type: 1RU Ultra High-Density Enclosure
- Fiber Capacity: 144 fibers maximum (6x24F LC-to-MTP® cassettes)
- Cassette Type: 24F LC-to-MTP®
- Interface Support: 10G, 40G, 100G Ethernet
- Adapter Options: LC with internal shutters for dust protection
- Fiber Type Compatibility: OM4, OS2
- Insertion Loss Options: Standard and low loss
- Optional Accessories: Front strain-relief bar for patch cord management

## Environmental & Mechanical Properties:

- Operating Temperature: -10°C to +60°C (14°F to 140°F)
- Enclosure Dimensions: 1.75" x 8.75" x 19" (with tie downs)
- Material: 16-Gauge CRS (cold-rolled steel) chassis
- Color: Standard black, powder-coat finish
- Mounting: Standard 19" or 23" rack mountable

## Features & Benefits:

- Maximizes rack space utilization by consolidating 144 fibers in 1RU
- Enclosure holds six 24F LC-to-MTP® cassettes
- Simplifies installation and ongoing management with modular cassette design
- Delivers reliable optical performance for Ethernet standards
- LC adapters with internal shutters for dust protection
- Improves cable organization with optional front strain-relief bar
- Available in standard and low-loss performance grades

## Part Numbers:

UHD-1RU	1RU Ultra High-Density Enclosure (holds up to six 24F cassettes, 144 fibers total)
CAS-UHD24F4GLC-XX	24F LC-to-MTP® Cassette, Multimode OM4 (-XX = wiring method)
CAS-UHD24FSMLC-XX	24F LC-to-MTP® Cassette, Singlemode OS2 (-XX = wiring method)

- **Note:** "XX" denotes the wiring method (e.g., Method A, Method B, or Method C). Please specify when ordering.